



How We Operate

1. You donate.

We collect and recycle your gently-used home medical equipment and unopened medical supplies. Bulk donations from doctor's offices and hospitals are also welcome. Donations are 100% tax deductible and receipts are always provided. Find a list of the donations we accept at www.goodwillhomemedical.org.

Here's how you can donate:

- Go to www.goodwillnj.org to find the Goodwill donation site nearest you.
- Donate at Goodwill Home Medical Equipment (300 Benigno Blvd., Bellmawr, NJ 08031).
- Or for larger items, call 609-396-1513 to schedule a pick-up at your home or medical facility.

2. We give items a second life.

Next, we sanitize and refurbish medical equipment to prepare for resale. We ensure that every item is sanitized and meets all Center for Disease Control (CDC) safety requirements. Repairs are done, as needed, to further restore items to their original function.

3. Together, we help people save and thrive.

We sell refurbished medical equipment to those who need it without any eligibility or prescription requirements. Items are sold in our Bellmawr, NJ warehouse and limited equipment is available for purchase at 12 Goodwill retail stores. Looking for specific equipment? Call us at 609-396-1513. Shoppers enjoy savings of up to 50% their full retail price while donors have the satisfaction of knowing their gently-used items now have a second life in helping others. Cash and credit cards are accepted. Bonus: our revenues fund Goodwill's job training programs that prepare individuals with disabilities and disadvantages for competitive employment.

Who We Serve

GHME serves *patients, caregivers, doctors and nurses, rehabilitation specialists, physical, occupational and speech therapists, social workers, home health aides, hospice nurses and others* who are in the market for purchasing or donating home medical equipment or parts.

What We Sell...and MORE!

- Wheelchairs (manual & power)
- Scooters
- Walkers, Canes, Crutches, Portable Ramps
- Bath & Shower Items
- Hospital Beds
- Patient Lifts
- Exercise Equipment
- Incontinence Products
- Pediatric Equipment
- And MUCH more!

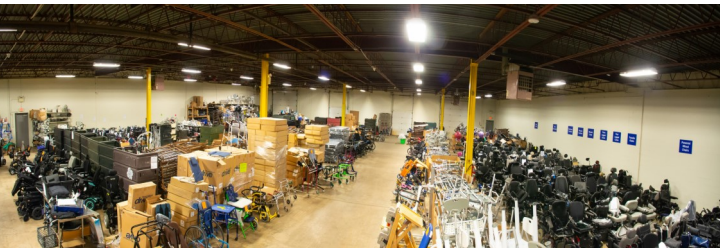
Visit Us — Connect With Us

Goodwill Home Medical Equipment Warehouse
300 Benigno Blvd., Bellmawr, NJ 08031
Open: Monday—Friday 9am to 3pm
Saturday 9am to 1pm, Closed Sunday

Call: 609.396.1513
Shop: www.goodwillhomemedical.org
E-mail: contact@goodwillhomemedical.org
Facebook: Goodwill Home Medical Equipment



Looking To Buy Affordable Home Medical Equipment?



Goodwill Home Medical Equipment: Certified, Reliable and Affordable Refurbished Medical Equipment

Our Vast Inventory Includes:

- Manual & power wheelchairs
- Scooters
- Walkers, canes, crutches
- Bath & shower items
- Pediatric equipment
- Hospital beds
- Hoyer lifts
- Incontinence products

...And MUCH more!

Sample Pricing Comparisons:

Item	MSRP	Goodwill Price
Manual Wheelchair	\$300 - \$1,500	\$50 - \$150
Cane	\$25	\$10
Hospital Bed	\$1,000	\$450 - \$550
Power Scooter	\$3,529	\$850 - \$1,200



Recycle. Reuse. Renew.

Visit our website for information on donating equipment to GHME.

VISIT US:

300 Benigno Blvd., Bellmawr, NJ 08031
609.396.1513

SHOP ONLINE:

www.goodwillhomemedical.org

HOURS OF OPERATION:

Mon.—Fri. 9 am—3 pm
Sat. 9 am—1 pm, Closed Sunday



¿Buscas Comprar Equipo Medico Economico?



Goodwill Home Medical Equipment:
Equipo Medico Reacondicionado
Confiable, Certificado Y Economico

Nuestro Amplio Inventario Incluye:

Sillas De Ruedas Manuales Y Electricas • Scooters
Equipo Pediatrico • Camas De Hospital
Andadores, Bastones Y Muletas • Grúas Ortopedica
Equipo Para El Baño • Pañales Para Adultos
...Y Mucho Más!

Comparación De Precios:

Articulo	MSRP	Precio Goodwill
Sillas De Ruedas	\$300 - \$1,500	\$50 - \$150
Bastones	\$25	\$10
Camas De Hospital	\$1,000	\$450 - \$550
Scooters Electricas	\$3,529	\$850 - \$1,200



Reciclar. Reutilizar. Renovar.

Visite Nuestra Página De Web
Para Obtener Más Información
Sobre Cómo Donar Equipo Medico

VISÍTANOS:

300 Benigno Blvd., Bellmawr, NJ 08031
609.396.1513

LAS COMPRAS EN LÍNEA:

www.goodwillhomemedical.org

HORAS DE OPERACIÓN:

Lunes A Viernes 9 am—3 pm
Sabados 9 am—1 pm, Cerrado Los Domingos